

LARGE FORMAT (FUSED) GLASS TILE ON INTERIOR WALLS

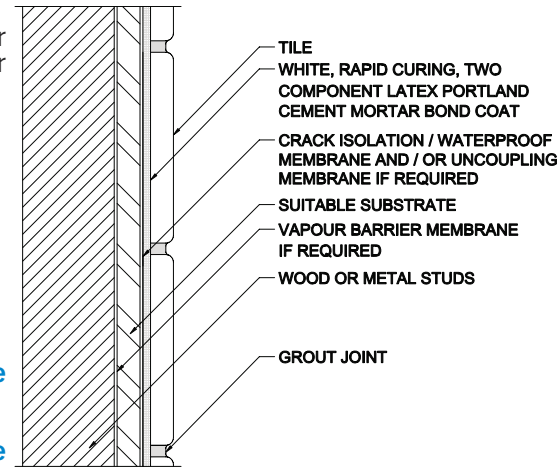
328GTW-2009/2010

SUITABLE SUBSTRATES

- For installation on the following stable substrates: Gypsum Board, CBU, Fiber Cement Underlayment, Coated Glass Mat Water Resistant Gypsum Boards or Cured Mortar Bed.
- Gypsum Board for dry interiors only.
- Over dry, well-braced wood studs or furring.
- Over well-braced metal studs.

MATERIALS

- Gypsum board – ASTM C36 or C630
- CBU – ANSI A118.9, installed in accordance with ANSI A108.9
- Fiber Cement Underlayment – ASTM C 1288
- Cured mortar bed, lath & membrane – ANSI 108.1B
- Crack Isolation Membrane – ANSI A118.12
1000 or 2000SC Flexilastic Crack Isolation & Sound Reduction Membrane with 4000 or 4001 Flexilastic Primer (ANSI 118.12)
- Waterproof membrane – ANSI A118.10.
Flextile WP900 or WP980 Waterproof & Crack Isolation Membrane (ANSI A118.10/A118.12)
- Vapor/moisture barrier membrane (when required) to be 15lb roofing felt or minimum 4-mil polyethylene film.
- Bond Coat:
Flextile 58XT Fast Set two component Latex Mortar System (ANSI A118.4/A118.11)
- Grout
**Flextile Polymer Modified Non-sanded Grout (ANSI A118.7)
ColourMax Plus Urethane Grout**



APPLICATION

- Crack Isolation Membrane – ANSI A108.17 or follow the CIM manufacturer's recommendations – to provide complete coverage of the substrate in the area on which the large format glass tile is to be installed.
- Waterproof membrane – ANSI A108.3 or follow the CIM manufacturer's recommendations.
- Since many large format glass tiles are somewhat translucent it is very important that complete coverage be achieved by back buttering each piece of tile with white thin-set mortar immediately prior to setting the tile to ensure that no voids or bubbles are visible against the back of the glass tile.
- Install tile in accordance with ANSI A 108.5 – use the minimum thickness of thin-set mortar that is recommended by the thin-set manufacturer – the maximum mortar thickness between the tile and C.I.M. is to be no greater than 3 mm after the tile has been beaten into place. An adequate thickness of thin-set mortar can generally be applied with a 5 mm V-notched trowel.
- Cutting of glass tile for any cuts other than those that are hidden in inside corners should be performed using a diamond blade designed for cutting glass on a wet saw – glass tile should be cut with the rotation of the saw blade into the glazed (back) side of the tile – on most saws this is face down.

LIMITATIONS

- This method is suitable only for large format glass tiles which are manufactured by fully fusing the colors/glazes/finishes with the glass body at temperatures above 550°C.
- Do not use regular gypsum board in wet areas such as tub & shower enclosures.
- Do not use in areas where gypsum board is exposed to temperatures above 52°C.

OTHER CONSIDERATIONS

- Maximum stud spacing – 406 mm o.c.
- Minimum recommended metal stud depth 92 mm.
- Metal studs – 20 gauge or heavier.
- Movement Joint (architect must specify type of joint and show location and details on drawings).
- Movement joints – mandatory, according to Detail 301MJ-2009/2010.



The above installation detail is used with the permission of the Terrazzo Tile & Marble Association of Canada. The installation products shown are Flextile's product recommendations for this specific detail, and are not intended to replace TTMAC's original generic specification.