

TILE INSTALLED ON CEMENT MORTAR OVER MASONRY OR CONCRETE WALLS

INTERIOR/EXTERIOR

302W-2009/2010

SUITABLE SUBSTRATES

- Concrete or masonry.

MATERIALS

- TILE - Ceramic, porcelain, mosaic, quarry, agglomerate, precast terrazzo, natural stone.

- Interior and dry areas:** All tile types as recommended by the manufacturer.

Exterior: Frost resistant materials only.

- SCRATCH COAT (7 mm minimum)

Flextile 57 Scratch Coat (mixed with Flextile 43 for Exterior)

- MORTAR BED (20 mm +)

Flextile Dry Pack Mortar (mixed with Flextile 43 for Exterior) with Flextile 57 Slurry Bond Coat

- WATERPROOF MEMBRANE (as required)

Flextile WP 900 or WP980 Waterproof & Crack Isolation Membrane (ANSI A118.10/A118.12)

- BOND COAT

Interior:

Flextile 51 Thin- Set Mortar (ANSI A118.1)

Flextile 52, 56SR or 66 Polymer Modified Thin-Set Mortars (ANSI A118.4/A118.11)

***Flextile Flex-Epoxy 100 Epoxy Mortar (ANSI A118.3) *Special application only**

Exterior:

Flextile 51/ 44 two-component Latex Mortar System (ANSI A118.4/A118.11)

Flextile 58XT Fast Set two-component Latex Mortar System (A118.4/A118.11)

- GROUT

Interior:

Flextile Polymer Modified Grout (ANSI A118.7)

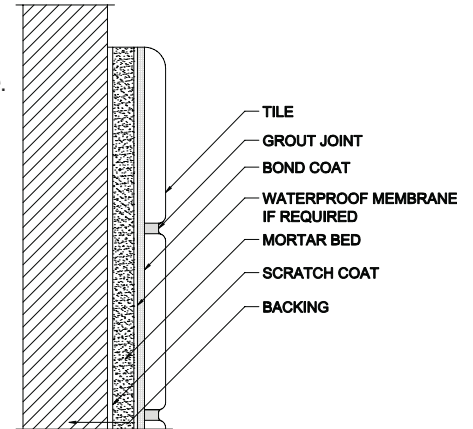
Flextile Flex-Epoxy 100 Epoxy Grout (ANSI A118.3)

ColourMax Plus Urethane Grout

Exterior:

Flextile 600 Polymer Modified Grout (ANSI A118.7)

ColourMax Plus Urethane Grout



APPLICATION

- Apply scratch coat and allow to cure a minimum of 24 hours at 20°C. Apply mortar bed to required thickness in an even plane. Finished tolerance of mortar bed not to exceed 6 mm in 3049 mm or 2 mm in 305 mm. Allow up to 72 hours to cure. Apply bond coat to mortar bed surface. Slide tile firmly into position. Use sufficient bond coat to ensure minimum 95% contact on exterior surfaces and wet areas and minimum 80% on interior dry surfaces. Force grout into full depth of joint, remove excess grout and clean.

LIMITATIONS

- Manufacturer's recommendations to be followed. Exterior tile installations not to be attempted with a temperature of less than 12°C. Do not use paper-back mounted tile. Mesh-back or dot mounted tile for exterior use or in locations of extreme moisture should not be used unless the manufacturer guarantees that the material is suitable for this type of installation.

OTHER CONSIDERATIONS

- Tile used on exterior applications to be frost resistant.
- Refer to 301MJ-2009/2010.
- Waterproof membrane if required must be specified Follow manufacturer's recommendations.
- Latex Portland cement mortars may require 14 – 60 days cure before exposure to water. Verify with the manufacturer the correct cure time required. Alternatively, to reduce the curing time required, a rapid set mortar may be more suitable.

2 mm = 1/16"
 6 mm = 1/4"
 7 mm = 5/16"
 20 mm = 3/4"
 305 mm = 12"
 3049 mm = 10'

12°C = 54° F
 20°C = 68° F



The above installation detail is used with the permission of the Terrazzo Tile & Marble Association of Canada. The installation products shown are Flextile's product recommendations for this specific detail, and are not intended to replace TTMAC's original generic specification.