

TILE INSTALLED ON INTERIOR/EXTERIOR WALLS ON CEMENT MORTAR OVER WOOD OR METAL STUDS

308W-2009/2010

SUITABLE SUBSTRATES

- Metal Lath on wood or metal studs, maximum 406 mm o.c.

MATERIALS

- TILE
- METAL LATH - 1.4 kg/m² (ASTM C847-96)
- VAPOUR RETARDER - Minimum 0.10 mm (6 mils) polyethylene film
- SCRATCH COAT (7 mm minimum)
Flextile 57 Scratch Coat (mixed with 43 Mortar Additive for Exterior Use)
- WATERPROOF MEMBRANE (if required)
Flextile WP900 or WP980 Waterproof & Crack Isolation Membrane (ANSI A118.10/A118.12)
- MORTAR BED. (20 mm+)
Flextile Dry Pack Mortar (mixed with 43 Mortar Additive for Exterior Use) and Flextile 57 Slurry Bond Coat
- BOND COAT (on fresh Mortar Bed)
Flextile 51 Bond Coat
- BOND COAT (on minimum 24 hour cured Mortar Bed)
Interior: Flextile 52, 56SR or 66 Polymer Modified Mortars (ANSI A118.4 / A118.11)
Flextile 51/44 two-component Latex Mortar System (ANSI A118.4 / A118.11)
Flextile 58XT Fast Set two-component Latex Mortar System (ANSI A118.4 / A118.11)
Exterior: Flextile 51/44 two-component Latex Mortar System (ANSI A118.4 / A118.11)
Flextile 58XT Fast Set two-component Latex Mortar System (ANSI A118.4 / A118.11)
- GROUT
Interior: Flextile Polymer Modified Grout (ANSI A118.7)
Flextile FlexEpoxy 100 – 100% Solids Epoxy Grout (ANSI A118.3)
ColourMax Plus Urethane Grout
Exterior: Flextile Polymer Modified Grout (ANSI A118.7)
ColourMax Plus Urethane Grout

APPLICATION

- Attach metal lath according to manufacturer's recommendations. Apply scratch coat and cure overnight. Apply mortar bed to required thickness. Finished tolerance of mortar bed not to exceed 6 mm in 3049 mm or 2 mm in 305 mm. Apply tile to bond coat before bond coat skins over. Use sufficient bond coat to ensure minimum 95% contact on exterior surfaces and wet areas and minimum 80% on interior surfaces. Slide tile firmly into position. Allow bond coat to cure. Force grout into full depth of joint, remove excess grout and clean.

LIMITATIONS

- Manufacturer's recommendations must be followed.
- Do not use paper-back mounted tile. Mesh-back mounted tile for exterior use or in locations of extreme moisture should not be used unless the manufacturer guarantees that the material is suitable for this type of installation.

OTHER CONSIDERATIONS

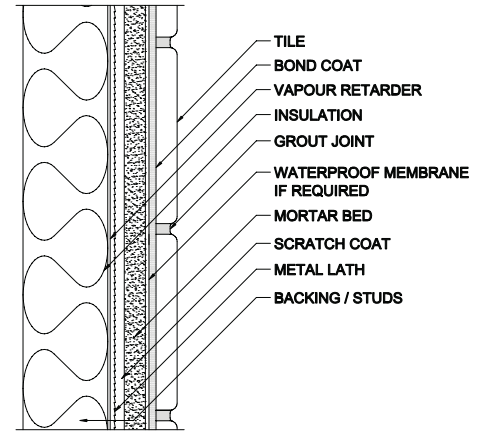
- Latex additive is recommended for modification of scratch coat, mortar bed and Portland cement bond coat. Follow manufacturer's recommendations. If mortar bed must be applied in multiple coats, allow 24 hours between coats.
- Tile used on exterior applications must be frost resistant.
- Refer to Notes For The Professional and 301MJ- 2009/2010.
- Consultant to specify waterproof membrane if required.
- Waterproof membrane if required must be specified. (ANSI A118.10-1999) Follow manufacturer's recommendations.

FOR DETAIL B

- Latex Portland cement mortars may require 14 – 60 days cure before exposure to water. Verify with the manufacturer the correct cure time required. Alternatively, to reduce the curing time required, a rapid set mortar may be more suitable. ANSI A118.4-1999 (Latex modified mortar for exterior alternative quick-set) for freeze thaw cycles.
- The difference between interior and exterior installations is the placement of the vapour retarder. Placement to be specified by the consultant.

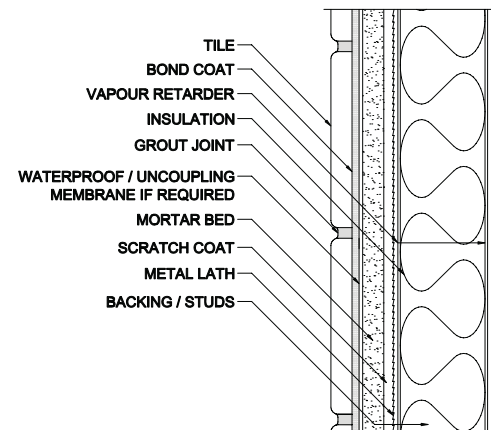
INTERIOR

A



EXTERIOR

B



The above installation detail is used with the permission of the Terrazzo Tile & Marble Association of Canada. The installation products shown are Flextile's product recommendations for this specific detail, and are not intended to replace TTMAC's original generic specification.