

## SUITABLE SUBSTRATES

- Concrete or masonry
- Exterior grade plywood
- Shower pan or waterproof membrane over structural base
- Exterior deck over steel pan or suspended slab
- Wall constructed in accordance with Details 302W-2009/2010, 303W-2009/2010, 304W-2009/2010, 305W-2009/2010 A or B, 307W-2009/2010, 308W-2009/2010.

## MATERIALS

- TILE
- Waterproof membrane ANSI A118.10-1999  
**Flextile WP980 Waterproof & Crack Isolation Membrane (ANSI A118.10/A118.12)**
- MORTAR BED minimum 20 mm to 51 mm sloped to drain.  
**Flextile Dry Pack Mortar mixed with Flextile 43 Mortar Additive Flextile 57 Slurry Bond Coat**
- BACKING – minimum 13 mm, Gypsum Board (ASTM C36-1997), Cementitious Backer Unit (CBU) (ANSI A118.9-1999), Coated Glass Mat Backer Board (ASTM C1178-1996) or nominal 11 mm Fibre Cement Backer Board (ASTM C1288-1999)
- BOND COAT (over mortar bed cured minimum of 24 hours)  
**Flextile 66 Polymer Modified Thin-Set Mortars (ANSI A118.4/A118.11)**  
**Flextile 51 or 53 / 44 – two component Latex Mortar System (ANSI A118.4/A118.11)**  
**Flextile 58XT Fast Set two-component Latex Mortar System (ANSI A118.4/A118.11)**  
**Flextile Flex-Epoxy 100 – 100% Solids Epoxy Mortar (ANSI A118.3)**
- GROUT – Portland cement or Latex Portland cement  
**Flextile 600 Polymer Modified Sanded Grout (ANSI A118.7)**
- TAPE – 51 mm wide fibre mesh tape
- Drain – with integrated bonding flange complying with CSA B-79-94 or double weep drain complying with equivalent CSA standard.

## APPLICATION

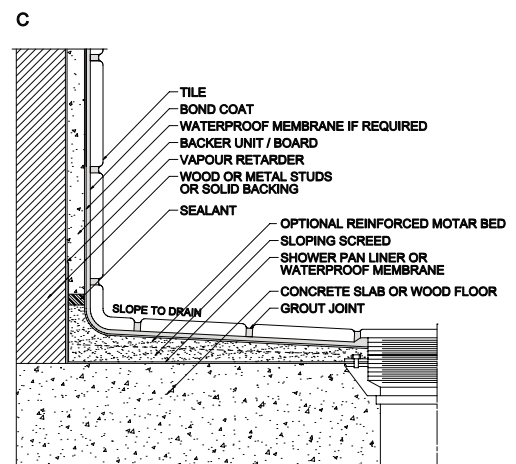
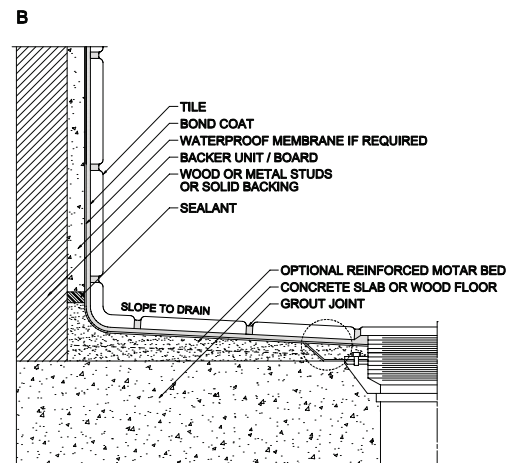
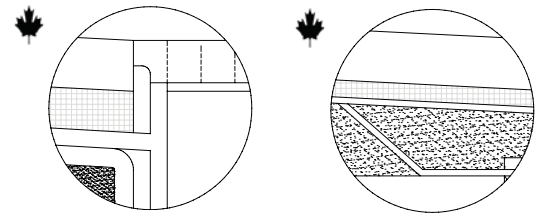
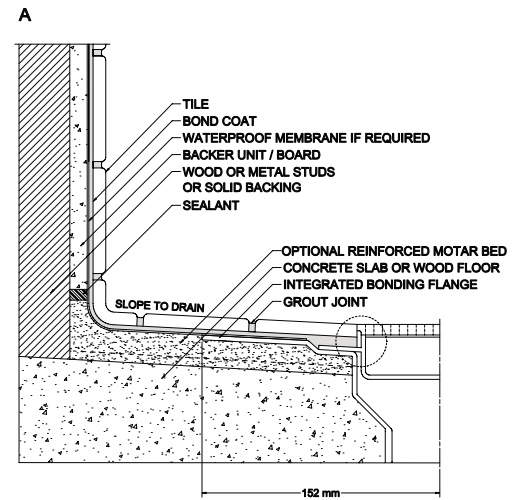
- Slope mortar bed a minimum of 2% (approximately 6 mm per 305 mm). Mortar bed thickness should not be less than 20 mm in thickness. Waterproof membrane must turn up wall at least 152 mm for exterior applications and up the wall to showerhead level for interior applications. Waterproof membrane must completely cover integrated bonding flange. Drain grate to be set flush with the surface of the tile.

## LIMITATIONS

- Requires integrated bonding flange for bonded waterproof membranes.
- Interior applications waterproof membrane must be used to the anticipated level of moisture exposure.
- Detail 304W-2009/2010 and 305W-2009/2010 (B) are not for exterior use.
- Detail 304W-2009/2010 must have waterproof membrane installed on surface (ANSI A118.10-1999).

## OTHER CONSIDERATIONS

- For high use showers and wet areas (hotels, gang showers, sports facilities etc.) a waterproof membrane to be used.
- All openings and cuts must be treated to ensure waterproof integrity.
- For Detail B a drainage layer may be incorporated over the waterproof membrane as recommended by manufacturer.
- Tile should be moisture resistant.



The above installation detail is used with the permission of the Terrazzo Tile & Marble Association of Canada. The installation products shown are Flextile's product recommendations for this specific detail, and are not intended to replace TTMAC's original generic specification.