

TILE TUB OVER WOOD FRAME - THIN-SET METHOD OVER MORTAR BED

316B-2009/2010

SUITABLE SUBSTRATES

- Minimum 16 mm exterior-grade plywood over wood joist, maximum 406 mm o.c. covered with waterproof membrane.

MATERIALS

- TILE
- METAL LATH 1.4 kg/m² (ASTM C847-95)
- SCRATCH COAT - 7 mm minimum.
Flextile 57 Scratch Coat (mixed with 43 Mortar Additive for Exterior Use)
- MORTAR BED - Minimum 20 mm on vertical surface, and 32 mm on horizontal surface.
Flextile Dry Pack Mortar with Flextile 57 Slurry Bond Coat
- WATERPROOF / CRACK ISOLATION MEMBRANE (as required)
Flextile WP900 or WP980 Waterproof & Crack Isolation Membrane (ANSI A118.10/A118.12)
- BOND COAT
- **Flextile 50, 52, 56SR, 61, 62 or 66 Polymer Modified Mortars (ANSI A118.4/A118.11)**
- **Flextile 51 or 53 / 43 or 44 – two component Latex Portland Cement Mortar System (ANSI A118.4/A118.11)**
- **Flextile 58XT Fast Set two-component Latex Mortar System (ANSI A118.4/A118.11)**
- GROUT
- **Flextile Polymer Modified Grout (ANSI A118.7)**
- **Flextile FlexEpoxy 100 – 100% Solids Epoxy Grout (ANSI A118.3)**
- **ColourMax Plus Urethane Grout**

APPLICATION

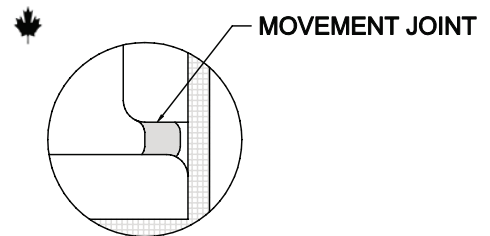
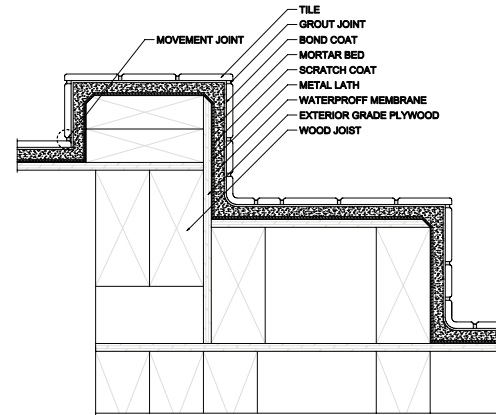
- Install waterproof membrane over plywood following manufacturers' recommendations. Installation of drainage fittings and testing for leaks by others prior to tile work. Install metal lath attaching only to substrate above water line. Apply scratch coat. Let cure 24 hours minimum. Apply mortar bed to required thickness and let cure minimum of 48 hours. Finished tolerance of mortar bed not to exceed 6 mm in 3049 mm or 2 mm in 305 mm. Slope floor to drain. Apply bond coat to mortar bed in sufficient quantity to provide minimum 95% contact with back of tile. Slide tile firmly into position. Beat mosaic into position. Contact should be evenly distributed to give full support of the tile. Allow bond coat to cure minimum 7 days before grouting. Force grout into full depth of joint, remove excess grout and clean..

LIMITATIONS

- For use on interior applications only.

OTHER CONSIDERATIONS

- Under conditions of low temperatures or high humidity, required drying time before grouting can vary from 14 to 60 days. Where job conditions permit, longer drying time is recommended.
- Drains should be designed to permit drainage of water at the tile surface and the surface of the waterproof membrane. For drainage see Detail 326DR-2009/2010.
- Where necessary provide a control joint around perimeter of curb.
- Shorter curing times may be achieved with specific products as recommended by the manufacturer.
- For installation of waterproof membrane follow manufacturer's recommendations (ANSI A118.10-1999)
- Refer to Notes For The Professional and 301MJ-2009/2010.
- For high use showers (hotels, gang showers, sports facilities, etc.) refer to Detail 319SR-2009/2010 Detail A & B.
- All openings and cuts must be treated to ensure waterproof integrity.
- Latex-Portland cement mortars may require 14 – 60 days cure before exposure to water. Verify with the manufacturer the correct cure time required. Alternatively, to reduce the curing time required, a rapid set mortar may be more suitable.
- If required, an underbed may be installed over a fresh scratch coat.



The above installation detail is used with the permission of the Terrazzo Tile & Marble Association of Canada. The installation products shown are Flextile's product recommendations for this specific detail, and are not intended to replace TTMAC's original generic specification.